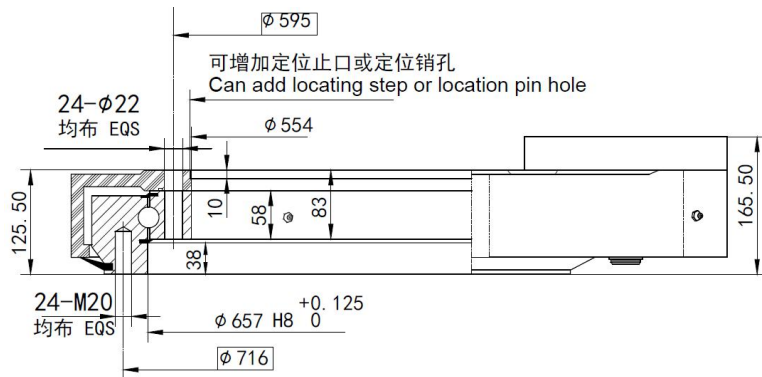
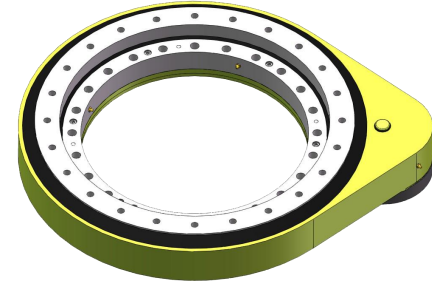
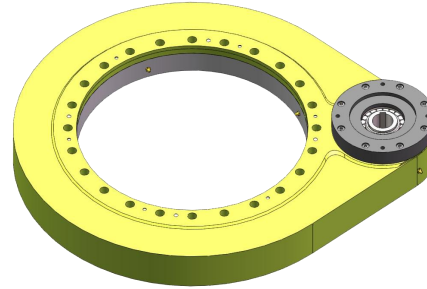
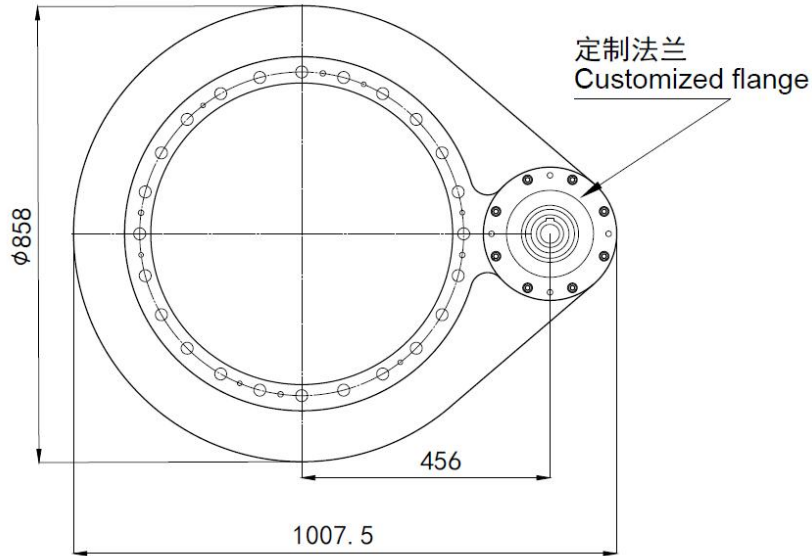


S-III-O-0655



项目/Item S-III-O-0655	符号 Sign	单位 Unit	数值 Value
模数/Module	M	mm	8
齿圈齿数/Teeth number of wheel	Z2	-	99
齿轮齿数/Teeth number of pinion	Z1	-	15
传动比/Gear ratio	i	-	6.60
最大扭矩/Max torque	Md max	N.m	38420
标准扭矩/Nom torque	Md nom	N.m	25549
最大保持扭矩/Max holding torque	Mh	N.m	38420
径向额定静载荷/Radial static load	Co rad	KN	785
轴向额定静载荷/Axial static load	Co ax	KN	2102
径向额定动载荷/Radial dynamic load	Crad	KN	290
轴向额定动载荷/Axial dynamic load	Cax	KN	338
重量/Weight	W	Kg	272

